

PARTMENT BLOCK D
RST FLOOR PLAN

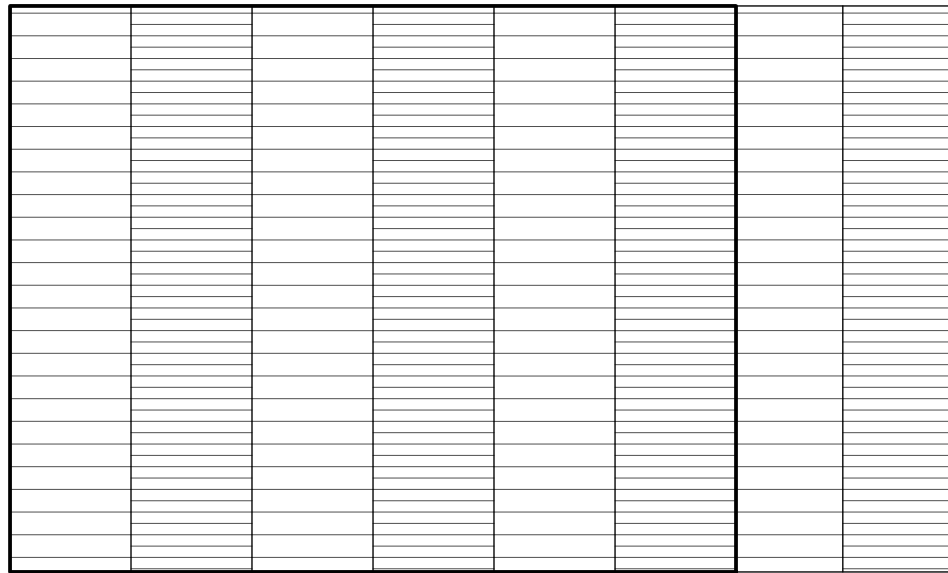
Unit Type

2 Bed Apartment - 4 Person

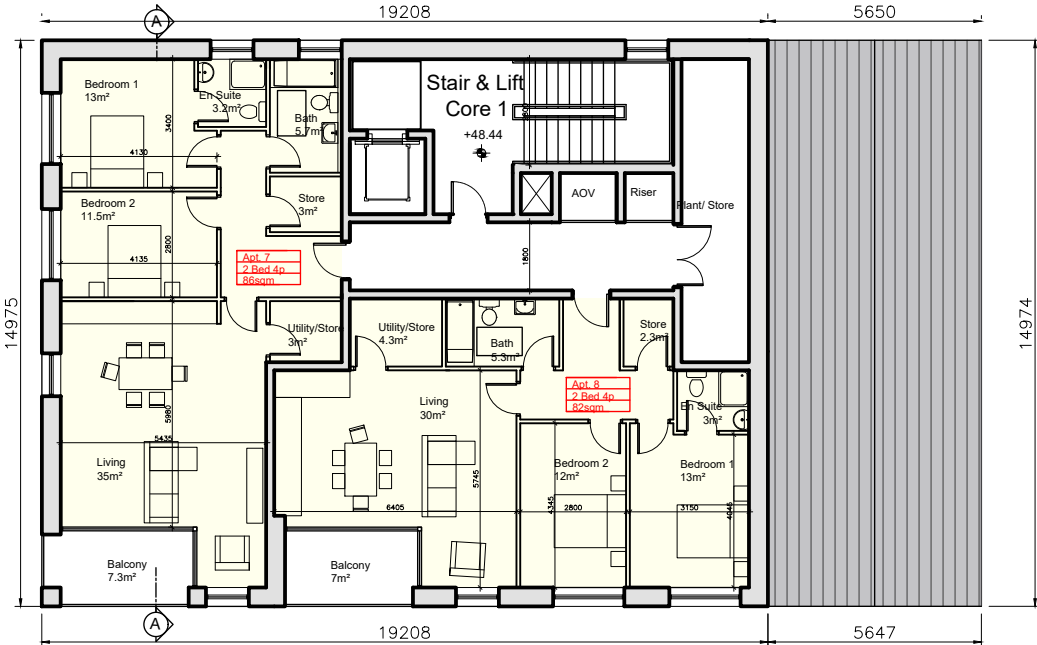
Apt. Block	1 Beds	2 Beds	Total Units
D	0	8	8



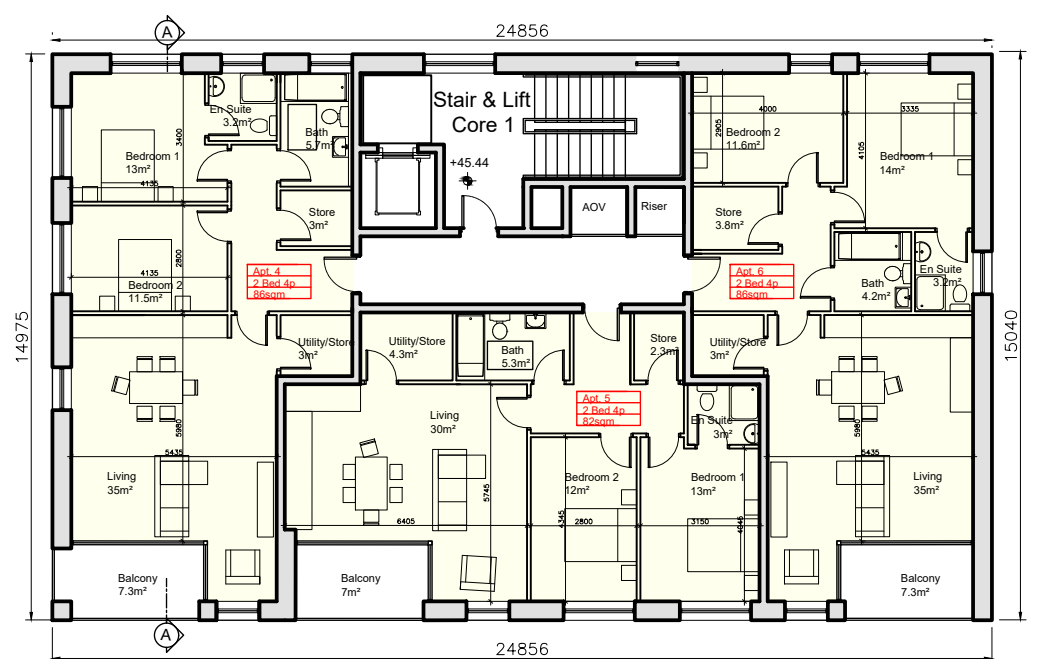
APARTMENT BLOCK D
SOUTH ELEVATION



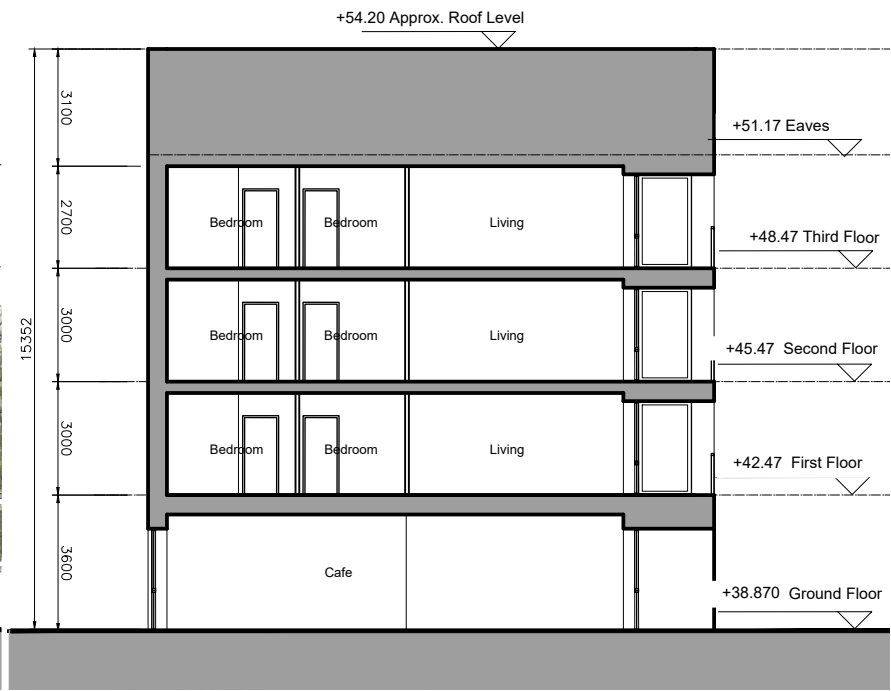
APARTMENT BLOCK D
ROOF PLAN



APARTMENT BLOCK D
THIRD FLOOR PLAN



APARTMENT BLOCK D
SECOND FLOOR PLAN



APARTMENT BLOCK D
SECTION A-A



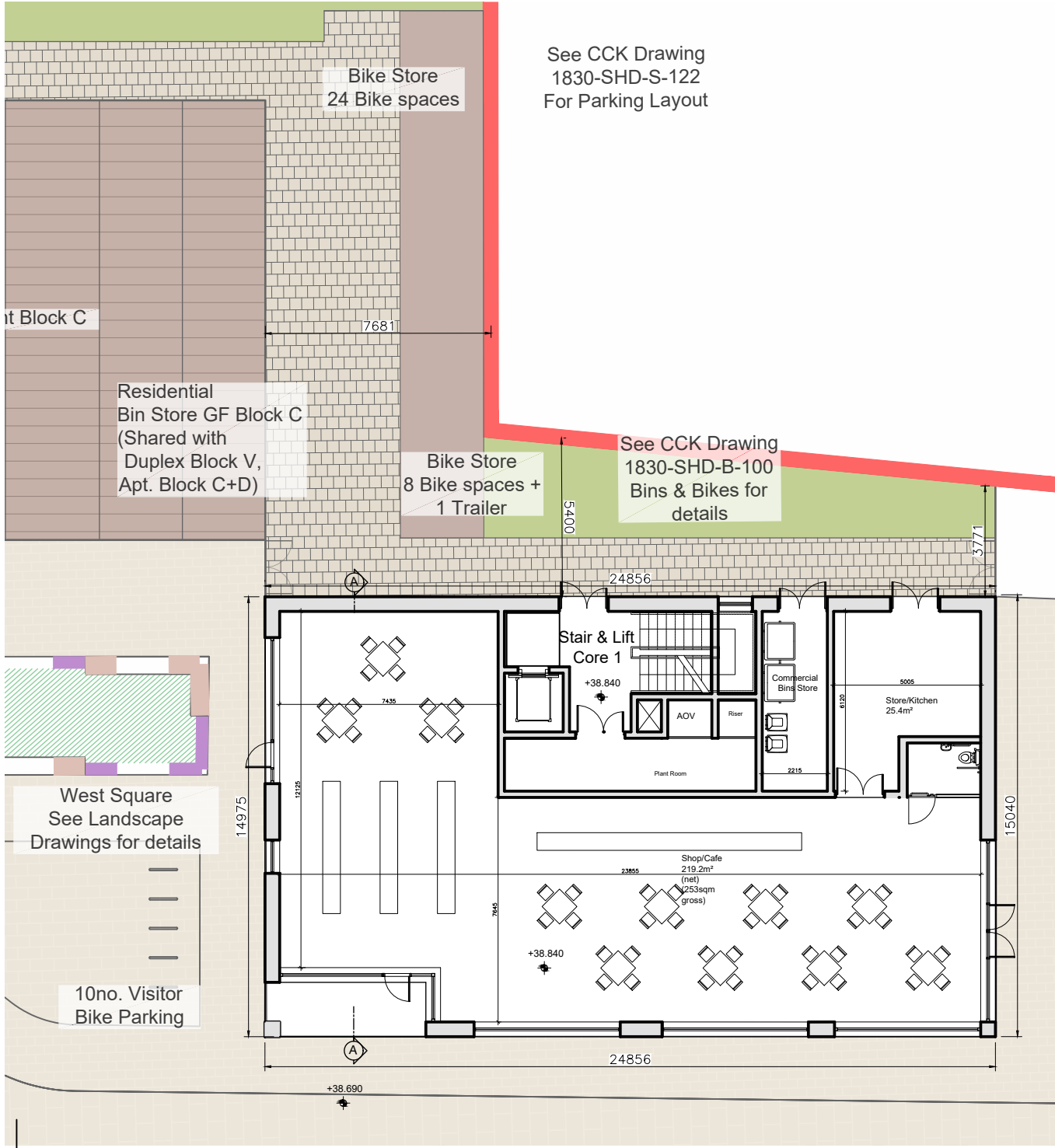
APARTMENT BLOCK D
NORTH ELEVATION



APARTMENT BLOCK D
WEST ELEVATION



APARTMENT BLOCK D
EAST ELEVATION



APARTMENT BLOCK D
GROUND FLOOR PLAN

- This drawing is copyright.
- Do not scale this drawing.
 - Errors and omissions to be immediately notified to Architect.
 - All dimensions to be checked on site.
 - To be read with relevant Engineers drawings.

Note on Internal Floor Plans
All noted room areas are gross.

The proposed areas and aggregate areas comply with *Sustainable Urban Housing: Design Standards for New Apartments Guidelines for Planning Authorities. (December 2020)*

Where bedroom areas are noted they are exclusive of any built-in storage space.

Storage is generally provided off the hallway or kitchen, and is not provided within a bedroom. Furniture, fittings and fixtures shown on the plans are indicative.

External Finishes:

Roof:
Slate or clay/concrete tiles with solar thermal or photovoltaic panels subject to orientation and detailed design

Walls:
Selected facing brick with render where indicated on drawings

Windows:
Aluminium framed window system

Gutters/downpipes:
uPVC or aluminium

Balconies:
Projecting: Toughened glazing & stainless steel handrails on precast concrete or metal frame galvanneal steel base and guarding/ railing.

Entrance Canopy:
Pressed or standing seam metal on Timber framing

revisions	date	ins
description	1830-SHD-A-4-200	drawing no.
Apartment Block D	1830-SHD-A-4-200	rev.
Floor Plans, Roof Plan		
Section & Elevations		
job	scale	1:200 A2
Development at	date	APL '22
Mooretown, Swords	drawn	AOL
Phase 3	checked	PG
client		
Gerard Gannon Properties		
issue		
Planning		
SHD Stage 3		

CONROY CROWE KELLY ARCHITECTS
65 MERRION SQUARE
DUBLIN 2
PHONE 66139901 FAX 6765715
e-mail info@eck.ie